

Prestained Multicolor Protein Molecular Weight Marker (10-170 kDa)

Catalog# BWR1073

Size: 100 μ l

Lot # Check on the product label

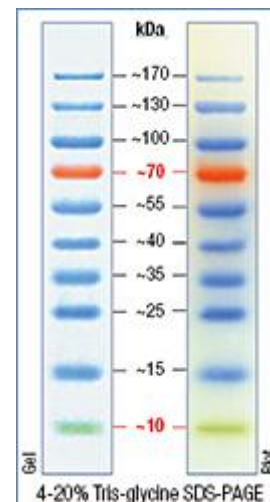
Storage: Store at 4°C for 3 months, and at -20°C for long term.

Storage Buffer

62.5 mM Tris-H₃PO₄ (pH 7.5, 25°C), 1 mM EDTA, 2% SDS, 10 mM DTT, 1 mM NaN₃ and 33% glycerol.

Features

- Sharp band and stable color.
- Two reference bands—orange (70kDa) and green (10kDa) bands
- Ready to use—without boiling.
- Easily trace in cohesion.
- Good efficiency in Western transfer.



Application

- Monitoring of protein migration during SDS-polyacrylamide gel electrophoresis.
- Verifying Western transfer efficiency.
- Approximate sizing of proteins on SDS-PAGE and Western blots.

Introductions

Prestained protein ladder / marker is designed for monitoring protein separation during SDS-polyacrylamide gel electrophoresis, verifying of Western transfer efficiency on PVDF, nylon and nitrocellulose membranes and approximate sizing of proteins. The protein ladder is composed of 10 prestained recombinant proteins with high-purity. These proteins are stained with 3 different dyes with molecular weights from 10 kDa to 170 kDa. It has two reference bands—70 kDa orange band and 10 kDa green band.

Protocol

1. Thaw the ladder either at room temperature or at 37°C for a few minutes to dissolve precipitated solids thoroughly. **Do not boil!**
2. Mix gently, but thoroughly, to ensure that the solution is homogeneous.
3. Load the following volumes of the ladder on
Min SDS-polyacrylamide gel: 5 μ l per well, with a thickness of 0.75-1.0 mm
Large SDS-polyacrylamide gel: 10 μ l per well, with a thickness of 0.75-1.0 mm

FOR RESEARCH USE ONLY. NOT FOR DIAGNOSTIC AND CLINICAL USE.

Chongqing Biospes Co., Ltd Tel: +86-23-67567091 Fax: +86-23-67745923

7F, Bldg B, High-tech Venture Park, # 107 Erlang Chuangye Rd, Jiulongpo District, Chongqing, 400039, China

www.biospes.com